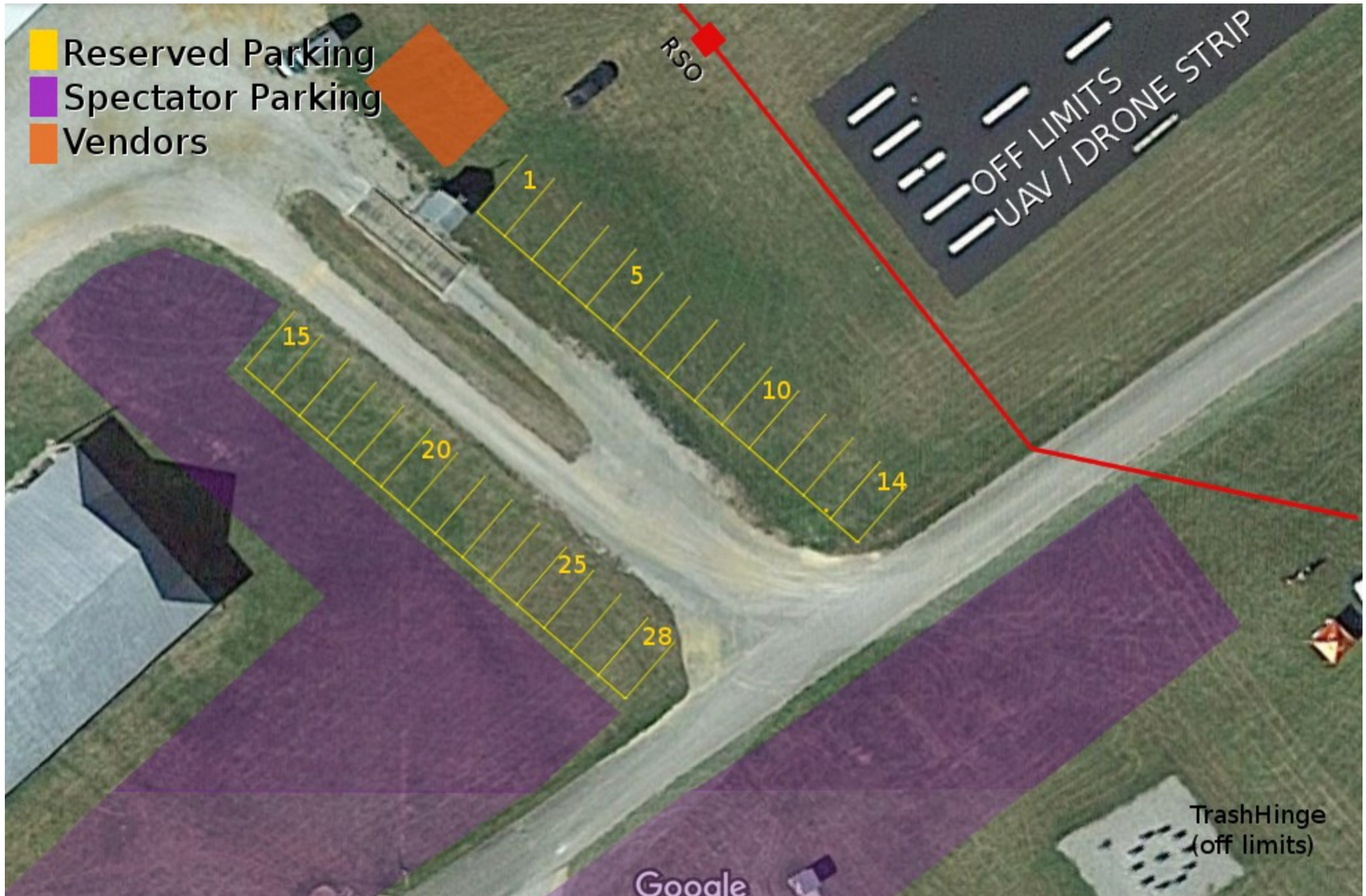


KENTLAND LAUNCH RESERVED PARKING ASSIGNMENTS



See Flight-Line Reservations On Back

CURRENTLY RESERVED PARKING ASSIGNMENTS

<u>HP Flyer Name</u>	<u>Spot#</u>	<u>Club</u>	<u>HP Flyer Name</u>	<u>Spot#</u>	<u>Club</u>
Jim Scarpine Jr	(by Ken)	Tripoli NC	Michael Verbeek	11	NRVR
Jimmy D.	1	NRVR	Paul Schaefer	12	Tripoli NC
Carlos & Terry Zapata	2	NRVR	Henry Hartman	13	Tripoli NC
Bob Schoner	3	NRVR	Mike Nay	14	Tripoli NC
Tweeks	4	NRVR	Joe Hill	15	Tripoli NC
Peter Cadra (aka Kerwin)	5	NRVR	Alan Whitmore	16	Tripoli NC
Steven Florig	6	NRVR	Jeff Goldstein	17	SEVRA
Kevin Shinpaugh	7	NRVR	Phill Ash	18	SEVRA
Bob McGwier	8	NRVR	Karl Westendorff	19	--
Eric Paterson	9	NRVR	Bob Rustin	20	--
Trevor Hallenbeck	10	NRVR			

Extra "Flight-Line" Parking First Come First Serve:

There are 28 flight line parking+canopy spaces (approx 10x20ft), those above plus eight additional sapces. For those who did not reserve spaces ahead of time, see Bob or Tweeks the day of the launch to be assigned to flight-line space. All other parking is regular spectator (purple on layout).