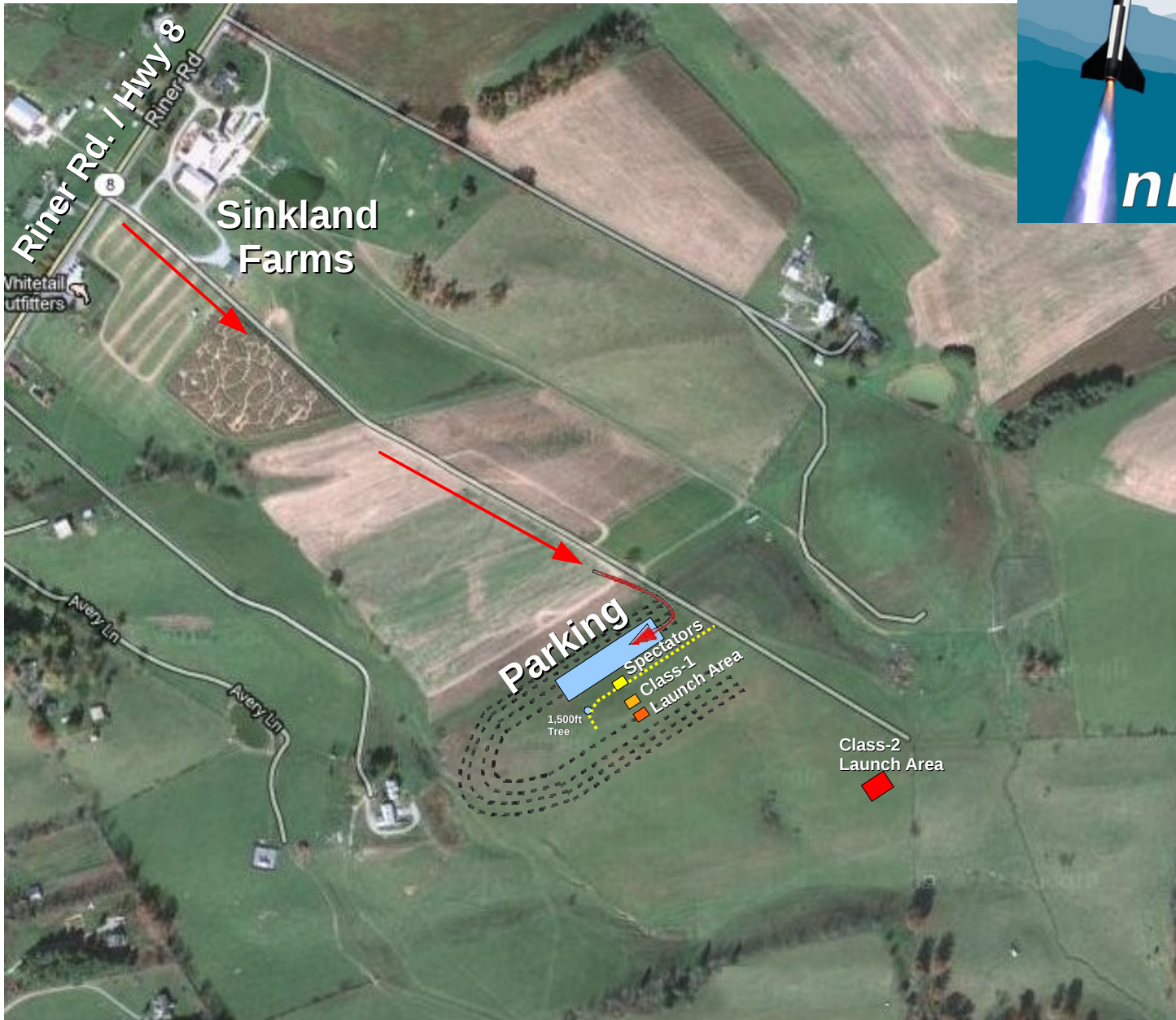


# Sinkland Farms Launch Site:

<http://tinyurl.com/launch-sinkland>



## **Parking:**

Along the road up to the launch site.

## **Spectators:**

Behind the yellow warning tape.

## **Class-1 Rockets:**

(low/medium power)  
Top of the hill, on rods or rail (1010)

## **Class-2 Rockets:**

(high power, >3.3lb/G motor)  
TBD

- Spectator Boundary
- Hills
- Yellow square - Launch Tent / RSO
- Orange square - Low Power/Rods
- Red square - Medium Power/Rail
- Red square - High Power/Rail